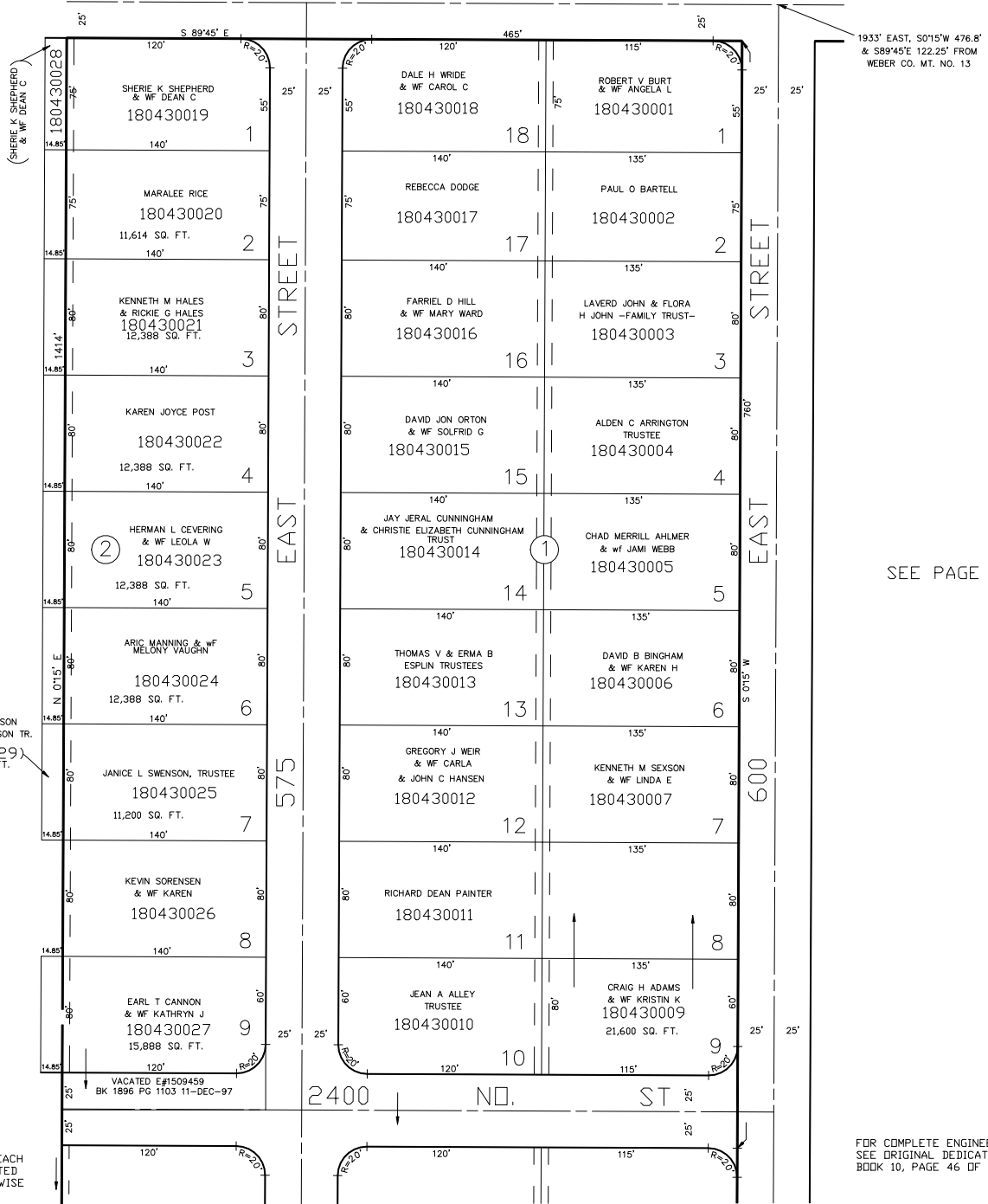


TAXING UNIT: 10

PART OF THE N.W. 1/4 OF SECTION 33, T.7N., R.1W., S.L.B. & M.  
**SIMMONS SUBDIVISION BLOCKS 1 & 2**  
 IN NORTH OGDEN CITY  
 SCALE 1" = 60'

SEE PAGE 42

2550 NORTH STREET



5' UTILITY & DRAINAGE EASEMENTS EACH SIDE OF PROPERTY LINES AS INDICATED BY DASHED LINES EXCEPT AS OTHERWISE SHOWN.

FOR COMPLETE ENGINEERING DATA SEE ORIGINAL DEDICATION PLAT IN BOOK 10, PAGE 46 OF RECORDS.